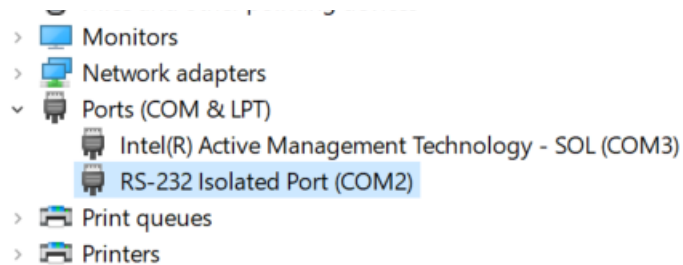
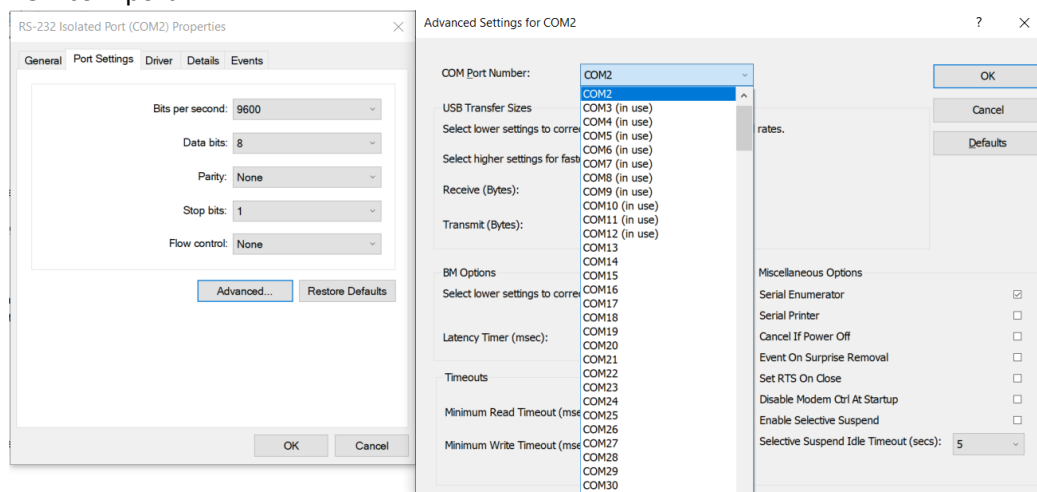


ActWiz Monitor LT, hours checking instructions

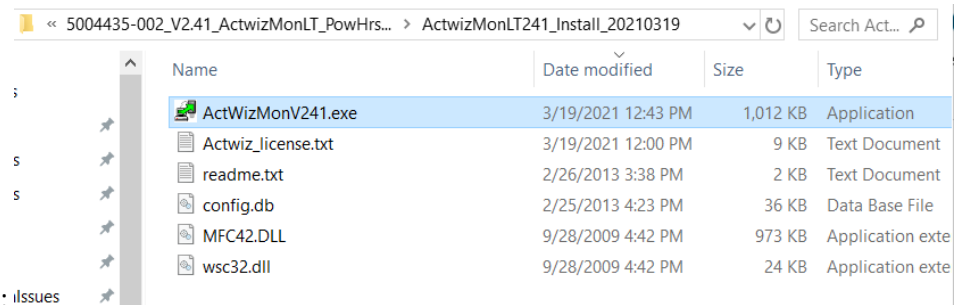
1. RS232 connection instructions, wire harness to serial port:
 - a. Connect Blue/Orange/White wire to RX (pin 2 of DB9)
 - b. Connect Yellow/Orange/White wire to TX (pin 3 of DB9)
 - c. Connect Green/Orange/White wire to GND (pin 5 of DB9)
2. Computer must have an RS232 port or RS232 adapter connected.
3. Find which com port to be used. Port must be set to use COM 1, 2, 3, or 4
 - a. If unsure of COM port for RS232 connection, open Device Manager (for Win 10, type “Device manager” in windows search)



- b. For this case, it is on “COM2”
- c. If com port is >4, double click on the port adapter and open “port settings >> advanced” to select new com port.

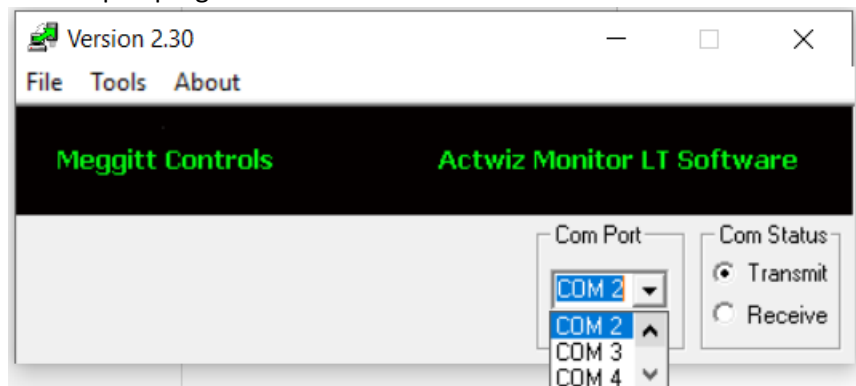


4. Unzip program to the computer. It is recommended to unzip to a folder on the C: drive or in the Windows Documents folder. (A very long path name could cause issues.) The distributed files must be kept in the same

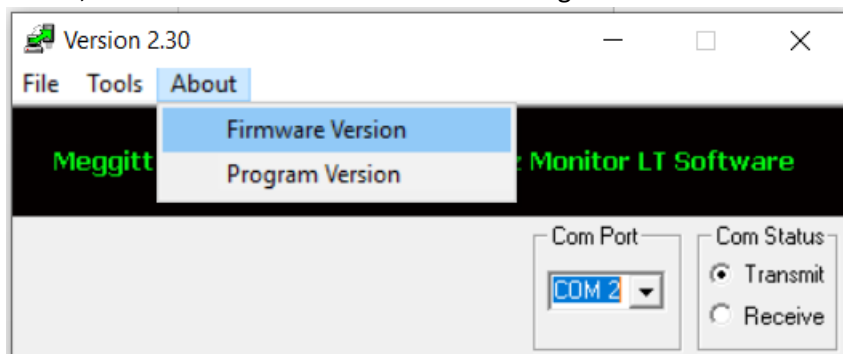


folder for operation: ilssues

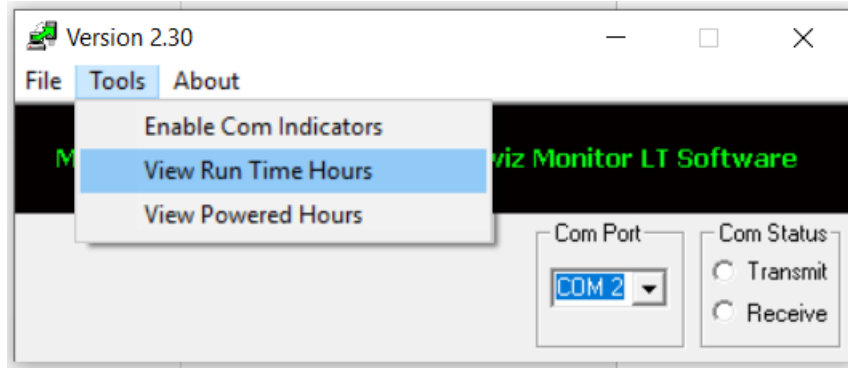
5. Double click on "ActWizMonV241.exe" to open program.



6. Select com port established above.
7. When connected, the "Com status" indicators should alternate between Transmit/Receive
8. Data collection:
 - a. Click "About>> Firmware version" and record firmware version. If version is <3.0, unit requires no action, but overhaul is recommended due to age of electronics.



- b. Click “Tools>>View run time hours” and record Run Hours. If run hours are near or >30000, overhaul



is recommended.

- c. Click “Tools>>View powered hours” and record Powered Hours. Unit must be removed for overhaul before powered hours reach 87600.