

Energy products

Flow shutoff valve C329305

Two-inch flange, 125 vdc,
solenoid pilot actuated (SPA)



Meggitt's two-inch poppet style gas flow shutoff valve is in use on a variety of industrial gas turbine engines. Millions of field operating hours continue to prove the high reliability of Meggitt design technology.

Specifications

Function:	Fail-safe fuel gas flow shutoff for aero-derivative gas turbine engines
Physical size:	9.95" flange to flange, 15.19" high
Weight:	85 pounds maximum
Flange type:	2.0" ANSI B16.5 CL 600 raised face flanges
Line pressure:	0 to 1000 psig
Fluid temperature:	32 to 380°F
Ambient temperature:	-65 to 220°F
Performance:	
Flow:	Linear trim, 0 to 6.1 pounds/sec natural gas, Cv = 55
Leakage:	ANSI class V
Operating time:	100 msec full stroke response, 100 msec fail-safe closed (de-energized)
Electrical:	
Solenoid:	Continuous duty, 125 VDC nominal (95 to 140 VDC), 0.43 ampere at 140 VDC and -65EF
Closed position indicating switch:	125 VDC, 3-wire, SPDT

Key features

- Fail-safe open (de-energized)
- Closed position indicating switch
- 100 msec full stroke response time
- High temperature poppet seal
- For use on both DLE and SAC turbine engines
- Explosion proof design, CSA/UL certified for NEC class 1, division 1, groups C and D, temp code T4, CE zone1, PED certified
- All stainless steel valve and body materials for NACE compliance
- No maintenance required under normal conditions

Meggitt Control Systems

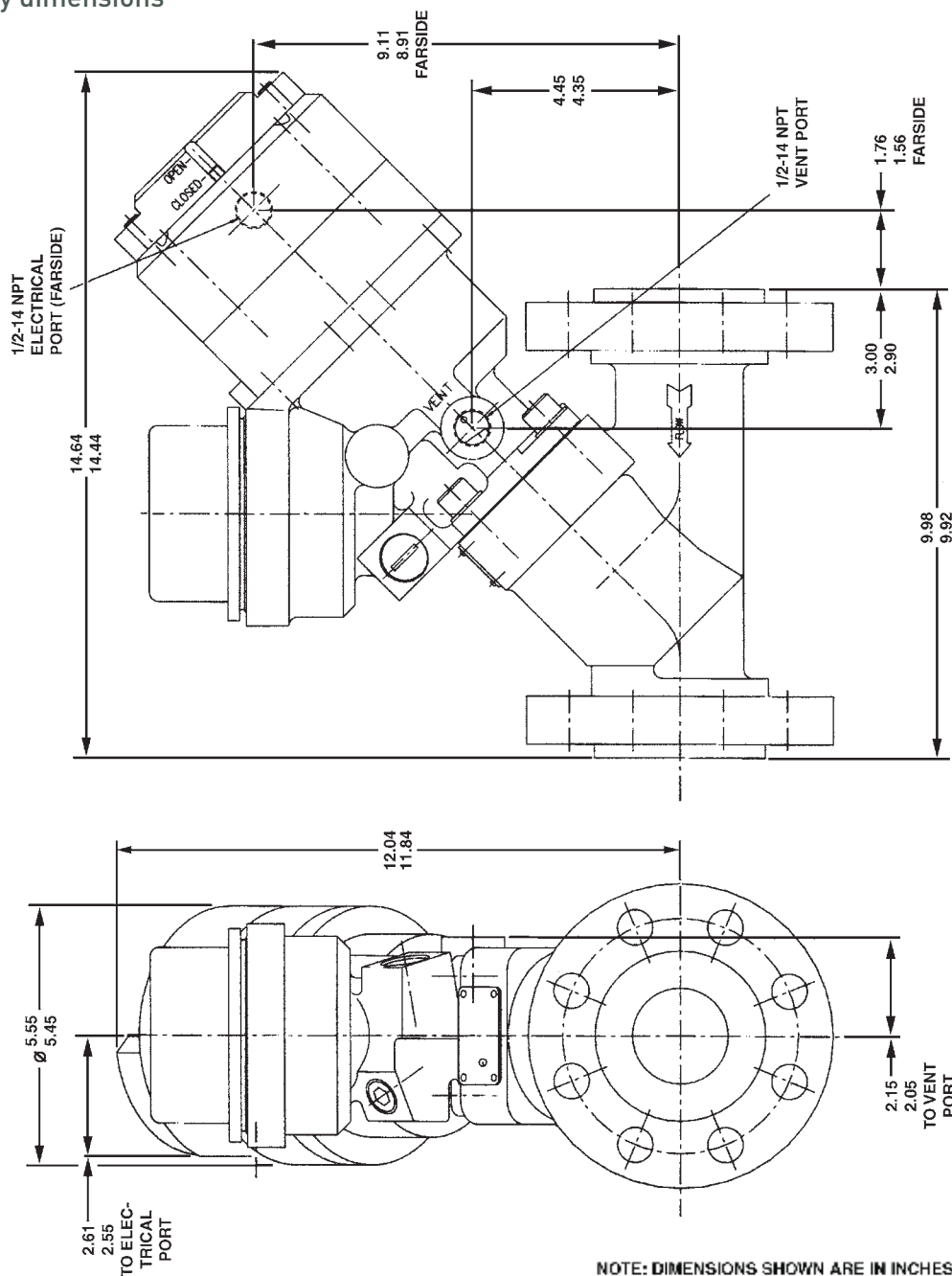
Our product competencies & services:
Aerospace valves | Thermal management solutions | Environmental control systems | Electro-mechanical products
Ground fueling products | **Energy products** | Aftermarket services

MEGGITT
smart engineering for
extreme environments

Energy products

Flow shutoff valve C329305

Key dimensions



Contact

Meggitt Controls

12838 Saticoy St
North Hollywood
California 91605-3505
USA

Telephone: (818) 765-8160
FAX: (818) 759-2194

www.meggitt.com

Meggitt Control Systems

Our product competencies & services:
Aerospace valves | Thermal management solutions | Environmental control systems | Electro-mechanical products
Ground fueling products | Energy products | Aftermarket services

MEGGITT
smart engineering for
extreme environments